

HZB2-500-1 Valve Regulated Lead Acid battery, 15 year design life for stand by power applications. 2 Volts 500 Ah @ C10

### Innovative Features

- Completely maintenance free, sealed construction eliminates the need for watering
- Increased durability and deep cycle ability for heavy demand applications
- Fully tank formed plates
- Analytical Grade electrolyte
- Spill proof / leak proof
- Valve regulated Max internal pressure 2.5 psi
- Multi-position usage
- ABS Case and cover - V0 on request
- Low self discharge
- FAA and IATA approved as non-hazardous
- Built to comply with IEC 896-2, DIN 43534, BS 6290 Pt4, Eurobat.



Photo may be of a similar layout/size model

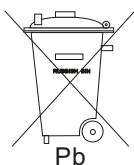
### Specifications

Nominal Voltage	2 Volts
Nominal Capacity	500Ah (C10 @ 25 °C)
Design Life	15 Years
Operating Temperature	-20 °C to 50 °C
Grid alloy	Calcium / Tin lead alloy
Plates	Flat Pasted
Separator	Absorbant Glass Mat
Active material	Very high purity lead
Case and cover	ABS (VO on request)
Charge Voltage	Float 2.27 - 2.30 VPC @25 °C Cycling See Haze cyclic charging profile Max ripple 0.05C (A)
Electrolyte	Sulphuric acid Analytical grade purity
Venting Valve	EPDM Rubber 1.5 to 2 psi (10.5 - 14 KPa) release pressure. Resealing at 1 psi (7 KPa)
Terminal	Insert 18mm Dia M8 thread. Epoxy sealed by extended mechanical paths
Torque setting	The recommended torque value for all types is 5-7 Nm
Cables	Connectors supplied as standard, cables on request.

2V  
AGM

Sealed Lead Acid 2 Volt Bloc AGM Range

PRODUCT SHEET HZB2-500-1



Haze Battery Company keenly encourages environmental awareness; PLEASE follow guidelines for the recycling /disposal of lead.

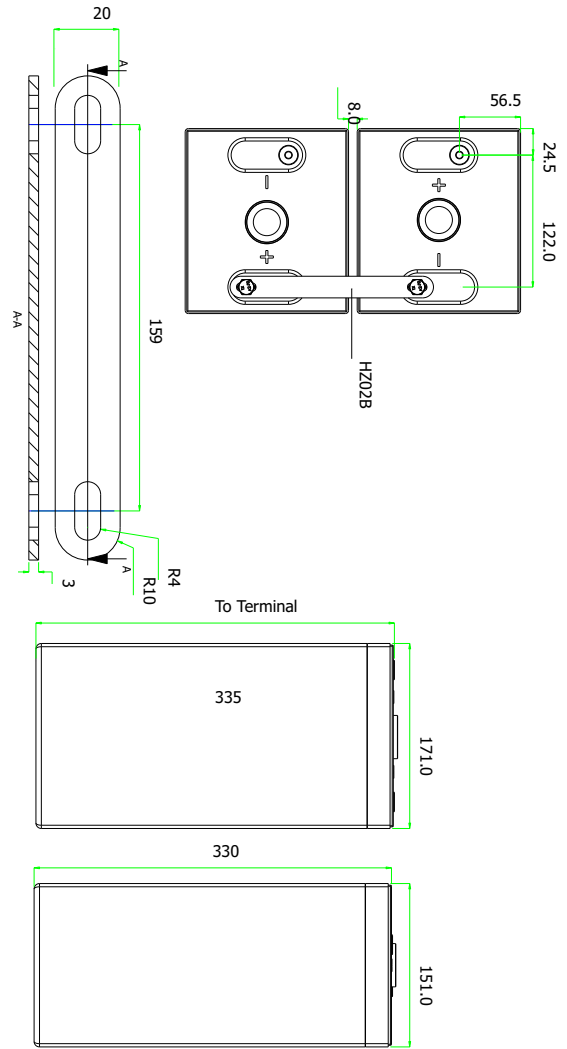
Website: [www.hazebattery.com](http://www.hazebattery.com)  
E mail : [sales@hazebattery.com](mailto:sales@hazebattery.com)

## Specifications

Nominal Voltage		2V	
Nominal Capacity		500 Ah	C10
Dimensions	Total Height (Inc. terminals)	329 mm	12.95 inches
	Length	211 mm	8.31 inches
	Width	176 mm	6.93 inches
	Weight	30.3 Kg	66.96 lbs

## Characteristics

Capacity 20 °C (68 °F) To 1.7 volts	20 hour rate	566.0 Ah
	10 hour rate	528.0 Ah
	5 hour rate	467.0 Ah
	1 hour rate	319.0 Ah
	15 min rate	176.7 Ah
	Internal Resistance	0.5 mOhms
Capacity correction for Temperature Variations (C20)	Impedance	S
	40 °C (104 °F)	102%
	20 °C (68 °F)	100%
	0 °C (32 °F)	85%
	-15 °C (5 °F)	65%
Self-Discharge 20 °C (68 °F)	Capacity after 1 months storage	98%
	Capacity after 3 months storage	94%
	Capacity after 6 months storage	86%
Short Circuit Current 20 °C (68 °F)	4000	
Terminal	Standard	16mm Insert M6 thread
	Optional	
Charging (Constant Voltage)	Cyclic	2.40 VPC (15-25 °C)
	Float	2.27 - 2.30 VPC (15-25 °C)



## Constant Power Discharge - Watts per Cell @20-25 °C

End V per Cell	5M	10M	15M	20M	25M	30M	35M	40M	45M	60M	90M	2 hr	3 hr	4 hr	5 hr	6 hr	7 hr	8 hr	10hr	12hr	20hr	24hr
1.85	1260	1158	1038	943	874	822	770	720	667	551	413	339	252	204	171	149	132	118	98.2	83.3	52.0	43.8
1.80	1537	1284	1116	1014	938	874	814	756	703	578	430	349	261	210	177	153	136	122	101	85.8	53.4	45.2
1.75	1785	1410	1220	1080	986	918	853	791	732	602	447	362	270	217	183	159	140	125	104	88.4	55.2	46.6
1.70	1932	1476	1279	1129	1022	946	872	810	751	612	455	368	274	220	186	161	143	127	106	90.0	55.8	47.2
1.65	2088	1578	1340	1182	1058	974	892	827	765	623	461	372	277	222	-	-	-	-	-	-	-	-

## Constant Amps Discharge - Amps @20-25 °C

End V per Cell	5M	10M	15M	20M	25M	30M	35M	40M	45M	60M	90M	2 hr	3 hr	4 hr	5 hr	6 hr	7 hr	8 hr	10hr	12hr	20hr	24hr
1.85	708	681	567	512	473	442	415	386	357	293	220	177	129	103	86.4	74.4	66.1	59.3	49.4	42.1	26.5	22.5
1.80	854	732	610	551	504	470	433	402	373	303	227	183	133	106	93.0	76.6	68.3	61.1	50.7	46.3	27.3	23.2
1.75	1003	786	668	591	538	492	451	416	385	312	234	188	138	110	92.2	79.2	70.6	62.8	52.3	44.4	28.0	23.9
1.70	1023	825	707	620	557	508	464	428	395	319	237	191	139	111	93.4	80.6	71.3	63.6	52.8	44.8	28.3	24.1
1.65	1140	894	740	645	571	520	476	437	400	322	239	193	141	112	-	-	-	-	-	-	-	-

## Ampere Hour @20-25 °C

End V per Cell	2 hr	3 hr	4 hr	5 hr	6 hr	7 hr	8 hr	10hr	12hr	20hr	24hr
1.85	353	387	413	432	448	463	477	494	505	530	540
1.80	365	400	425	465	461	478	491	507	555	545	556
1.75	376	413	440	461	477	494	505	523	533	560	573
1.70	381	418	445	467	485	499	511	528	538	566	579
1.65	386	422	449	-	-	-	-	-	-	-	-

**UL Recognised Component MH28512**



120810